

**Report No.:** 248131350-01

Page 1 of 9

**Client:** **CÔNG TY TNHH HCSP**  
518 Tô Ngọc Vân, phường Tam Phú, quận Thủ Đức

**Test Item(s):** Please refer to page 02

**Identification/  
Model No(s):** Please refer to page 02

**Sample receiving date:** 2020-03-31

**Test period:** 2020-04-03 to 2020-04-07

**Test Specification:**

**Test result:**

Legal requirement:

Restriction of the Use of Certain Hazardous Substances in Electrical and Electronic Equipment, 2011/65/EU and its amendments

- |  |      |
|--|------|
| 1. Cadmium, Lead, Chromium (VI), Mercury, Polybrominated biphenyls (PBB) and Polybrominated diphenyl ethers (PBDE) | PASS |
| 2. Phthalates ( DEHP, DBP, BBP, DiBP)  | PASS |

For and on behalf of  
TÜV Rheinland Vietnam Co., Ltd.



Ms. Dao Thuy Khanh Linh/  
Project Manager

2020-04-17

Date

Name/Position

*Test result is drawn according to the kind and extent of tests performed.*

*This test report relates to the a. m. test sample. Without permission of the test center this test report is not permitted to be duplicated in extracts. This test report does not entitle to carry any safety mark on this or similar products.*

Test Report No.: 248108227-01

Page 2 of 9

ITEM	SAMPLE NAME	MODEL	MATERIAL	COLOR
1	SECCO POWDER DESICCANT 1000GR	SECCO 1000GR	POWDER	OFF WHITE
2	SECCO POWDER DESICCANT 50GR	SECCO 50GR	POWDER	OFF WHITE
3	SECCO POWDER DESICCANT 20GR	SECCO 20GR	POWDER	OFF WHITE
4	GLODRIC POWDER DESICCANT 25GR – 2 LAYERS	GLODRIC 25GR	POWDER	WHITE
5	SECCO SILICAGEL DESICCANT 20GR	SILICAGEL 20GR	SILICAGEL	TRANSLUCENT
6	SECCO BENTONITE CAT LITTER 10L	SECCO BENTONITE CAT LITTER 10L	CLAY	GRAY + BLUE + PINK
7	ACTIVATED CLAY DESICCANT 100GR	CLAY 100GR	POWDER	BROWN
8	SECCO OXYGEN ABSORBER 50CC FOR FOOD	OXYGEN ABSORBER 50CC	CLAY	BLACK
9	SECCO ETHYLENE ABSORBER 5GR FOR FRUITS	ETHYLENE ABSORBER 5GR	CLAY	PURPLE
10	SECCO NEEM ORGANIC INSECTICIDE	NEEM ORGANIC INSECTICIDE	NEEM	BROWN
11	SECCO NEEM ORGANIC FERTILIZER	NEEM ORGANIC FERTILIZER	NEEM	BLACK
12	SECCO SILICAGEL CAT LITTER 5L	SECCO SILICAGEL CAT LITTER 5L	SILICAGEL	TRANSLUCENT + BLUE

**Material List**

Material No.	Material	Color	Location
M001	Powder	Off white	Powder desiccant
M002	Powder	Off white	Powder desiccant
M003	Powder	Off white	Powder desiccant
M004	Powder	White	Powder desiccant
M005	Silica gel	Translucent	Silicagel
M006	Clay	Gray/Blue/Pink	Bentonite cat litter
M007	Clay	Brown	Clay desiccant
M008	Powder	Black	Oxygen absorber
M009	Clay	Purple	Clay desiccant
M010	Chemical preparation	Brown	Liquid
M011	Clay	Black	Clay desiccant
M012	Silica gel	Translucent	Silica gel cat litter

### 1. Cadmium, Lead, Chromium (VI), Mercury, Polybrominated biphenyls (PBB) and Polybrominated diphenyl ethers (PBDE)

Test method: - Total Cadmium, Lead, Mercury:  
Totally digested then determination by ICP-OES, follow IEC 62321-4:2013 and IEC 62321-5:2013

- Chromium (VI):  
Non-metal: Alkaline digestion, determination by UV-Vis spectrophotometry  
Metal: spot test and followed by boiling water test, follow IEC 62321-7-1:2015

- PBBs, PBDEs:  
Extraction with organic solvent, determination by GC-MS, follow IEC 62321-6:2015

#### Test result:

Test parameter	Unit	Material No.		M001	M002	M003
		RL	Requirement	Result	Result	Result
Cadmium (Cd)	mg/kg	2	< 100	n.d.	n.d.	n.d.
Lead (Pb)	mg/kg	2	< 1000	n.d.	n.d.	n.d.
Mercury (Hg)	mg/kg	2	< 1000	n.d.	n.d.	n.d.
Chromium VI (Cr VI) for metal protective coating	µg/cm <sup>2</sup>	0.02	< 0.1	N.A.	N.A.	N.A.
Chromium VI (Cr VI)	mg/kg	3	< 1000	n.d.	n.d.	n.d.
Total Polybrominated biphenyls (PBBs) (*)	mg/kg	5	< 1000	n.d.	n.d.	n.d.
Total Polybrominated biphenyl ethers (PBDEs) (*)	mg/kg	5	< 1000	n.d.	n.d.	n.d.
Conclusion				Pass	Pass	Pass

Test parameter	Unit	Material No.		M004	M005	M006
		RL	Requirement	Result	Result	Result
Cadmium (Cd)	mg/kg	2	< 100	n.d.	n.d.	n.d.
Lead (Pb)	mg/kg	2	< 1000	n.d.	n.d.	19
Mercury (Hg)	mg/kg	2	< 1000	n.d.	n.d.	n.d.
Chromium VI (Cr VI) for metal protective coating	µg/cm <sup>2</sup>	0.02	< 0.1	N.A.	N.A.	N.A.
Chromium VI (Cr VI)	mg/kg	3	< 1000	n.d.	n.d.	n.d.
Total Polybrominated biphenyls (PBBs) (*)	mg/kg	5	< 1000	n.d.	n.d.	n.d.
Total Polybrominated biphenyl ethers (PBDEs) (*)	mg/kg	5	< 1000	n.d.	n.d.	n.d.
Conclusion				Pass	Pass	Pass

Test Report No.: 248108227-01

Page 4 of 9

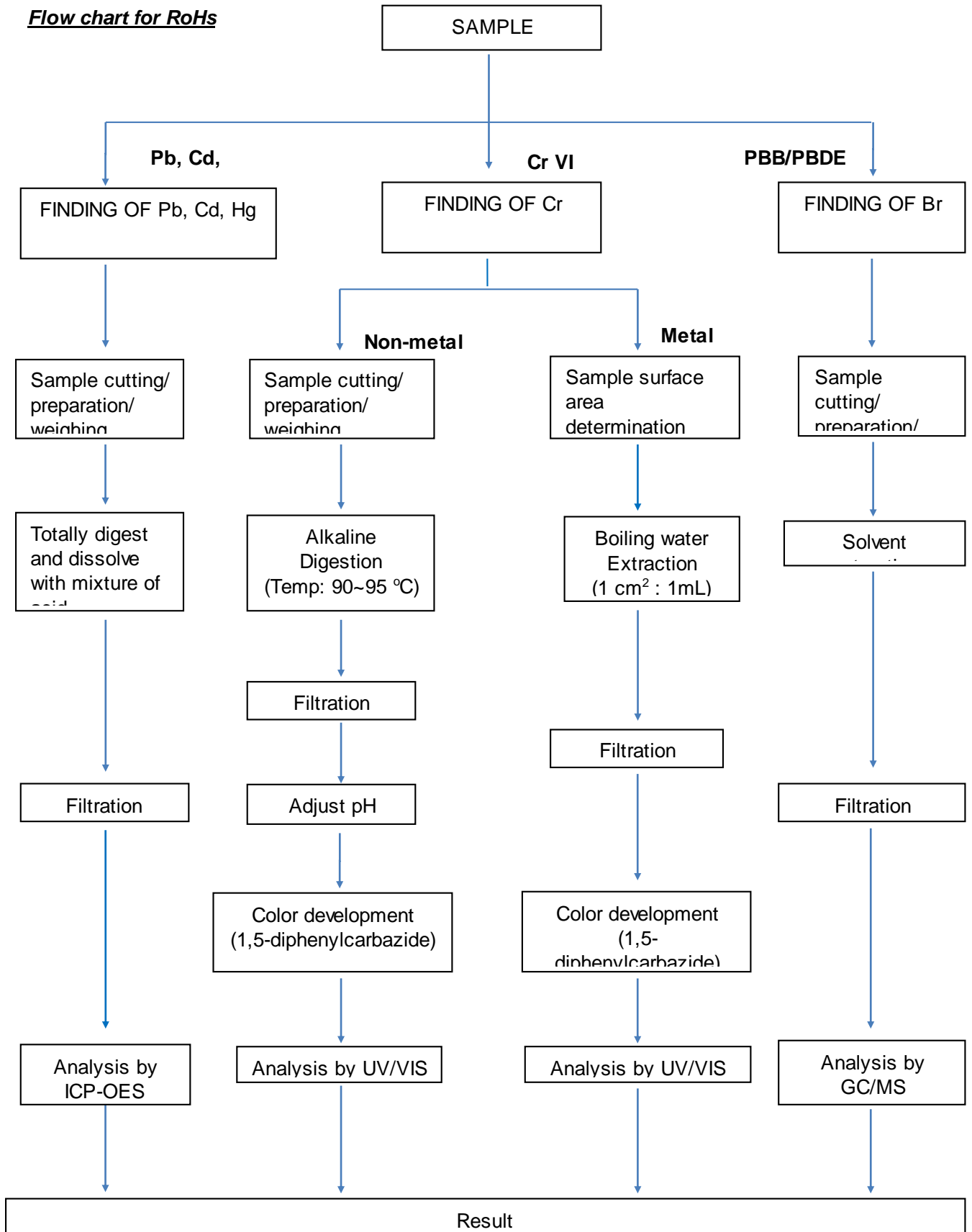
Test parameter	Unit	RL	Material No.	M007	M008	M009
			Requirement	Result	Result	Result
Cadmium (Cd)	mg/kg	2	< 100	n.d.	n.d.	n.d.
Lead (Pb)	mg/kg	2	< 1000	n.d.	n.d.	n.d.
Mercury (Hg)	mg/kg	2	< 1000	n.d.	n.d.	n.d.
Chromium VI (Cr VI) for metal protective coating	µg/cm <sup>2</sup>	0.02	< 0.1	N.A.	N.A.	N.A.
Chromium VI (Cr VI)	mg/kg	3	< 1000	n.d.	n.d.	n.d.
Total Polybrominated biphenyls (PBBs) (*)	mg/kg	5	< 1000	n.d.	n.d.	n.d.
Total Polybrominated biphenyl ethers (PBDEs) (*)	mg/kg	5	< 1000	n.d.	n.d.	n.d.
Conclusion				Pass	Pass	Pass

Test parameter	Unit	RL	Material No.	M010	M011	M012
			Requirement	Result	Result	Result
Cadmium (Cd)	mg/kg	2	< 100	n.d.	n.d.	n.d.
Lead (Pb)	mg/kg	2	< 1000	n.d.	n.d.	n.d.
Mercury (Hg)	mg/kg	2	< 1000	n.d.	n.d.	n.d.
Chromium VI (Cr VI) for metal protective coating	µg/cm <sup>2</sup>	0.02	< 0.1	N.A.	N.A.	N.A.
Chromium VI (Cr VI)	mg/kg	3	< 1000	n.d.	n.d.	n.d.
Total Polybrominated biphenyls (PBBs) (*)	mg/kg	5	< 1000	n.d.	n.d.	n.d.
Total Polybrominated biphenyl ethers (PBDEs) (*)	mg/kg	5	< 1000	n.d.	n.d.	n.d.
Conclusion				Pass	Pass	Pass

**Abbreviation:** mg/kg = milligram per kilogram  
 RL = Reporting Limit  
 n.d.= Not Detected (<RL)  
 µg/cm<sup>2</sup> = microgram per square centimeter  
 N.A.: Not Applicable

**Remark:** According to IEC 62321-7-1:2015, result of Cr VI for metal sample is shown as Pass/Fail/Inconclusive.  
 Pass = Absence of Cr VI coating, Cr VI concentration is below the 0,10 µg/cm<sup>2</sup>  
 Fail = Presence of Cr VI coating, Cr VI concentration is above 0.13 µg/cm<sup>2</sup>  
 Inconclusive = Cr VI concentration is between 0.10–0.13 µg/cm<sup>2</sup>. Further test with extra samples is recommended

**Flow chart for RoHs**



Test Report No.: 248108227-01

Page 6 of 9

(\*)

List of PBBs	List of PBDEs
Bromobiphenyl (MonoBB)	Bromodiphenyl ether (MonoBDE)
Dibromobiphenyl (DiBB)	Dibromodiphenyl ether (DiBDE)
Tribromobiphenyl (TriBB)	Tribromodiphenyl ether (TriBDE)
Tetrabromobiphenyl (TetraBB)	Tetrabromodiphenyl ether (TetraBDE)
Pentabromobiphenyl (PentaBB)	Pentabromodiphenyl ether (PentaBDE)
Hexabromobiphenyl (HexaBB)	Hexabromodiphenyl ether (HexaBDE)
Heptabromobiphenyl (HeptaBB)	Heptabromodiphenyl ether (HeptaBDE)
Octabromobiphenyl (Tech)(OctaBB)	Octabromodiphenyl ether (OctaBDE)
Nonabromobiphenyl (NonaBB)	Nonabromodiphenyl ether (NonaBDE)
Decabromobiphenyl (DecaBB)	Decabromodiphenyl ether (DecaBDE)

## 2. Phthalates ( DEHP, DBP, BBP, DiBP)

Test method: Extraction with organic solvent, determination by GC-MS  
With reference to IEC 62321-8 (111/321/CD)

### Test result:

Test parameter	Unit	RL	Material No.				
			Requirement	M001 Result	M002 Result	M003 Result	M004 Result
Diethylhexylphthalate (DEHP)	mg/kg	50	< 1000	n.d.	n.d.	n.d.	n.d.
Dibutylphthalate (DBP)	mg/kg	50	< 1000	n.d.	n.d.	n.d.	n.d.
Benzybutylphthalate (BBP)	mg/kg	50	< 1000	n.d.	n.d.	n.d.	n.d.
Diisobutylphthalate (DiBP)	mg/kg	50	< 1000	n.d.	n.d.	n.d.	n.d.
Conclusion				Pass	Pass	Pass	Pass

Test parameter	Unit	RL	Material No.				
			Requirement	M005 Result	M006 Result	M007 Result	M008 Result
Diethylhexylphthalate (DEHP)	mg/kg	50	< 1000	n.d.	n.d.	n.d.	n.d.
Dibutylphthalate (DBP)	mg/kg	50	< 1000	n.d.	n.d.	n.d.	n.d.
Benzybutylphthalate (BBP)	mg/kg	50	< 1000	n.d.	n.d.	n.d.	n.d.
Diisobutylphthalate (DiBP)	mg/kg	50	< 1000	n.d.	n.d.	n.d.	n.d.
Conclusion				Pass	Pass	Pass	Pass

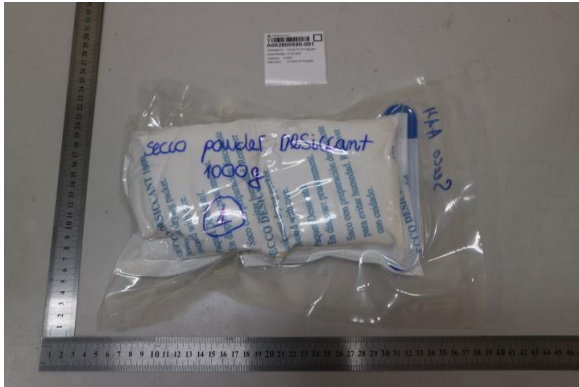
Test parameter	Unit	RL	Material No.				
			Requirement	M009 Result	M010 Result	M011 Result	M012 Result
Diethylhexylphthalate (DEHP)	mg/kg	50	< 1000	n.d.	n.d.	n.d.	n.d.
Dibutylphthalate (DBP)	mg/kg	50	< 1000	n.d.	n.d.	n.d.	n.d.
Benzybutylphthalate (BBP)	mg/kg	50	< 1000	n.d.	n.d.	n.d.	n.d.
Diisobutylphthalate (DiBP)	mg/kg	50	< 1000	n.d.	n.d.	n.d.	n.d.
Conclusion				Pass	Pass	Pass	Pass

**Abbreviation:** n.d. = not detected (< Reporting Limit)

RL = Reporting Limit

mg/kg = milligram per kilogram

Sample photo



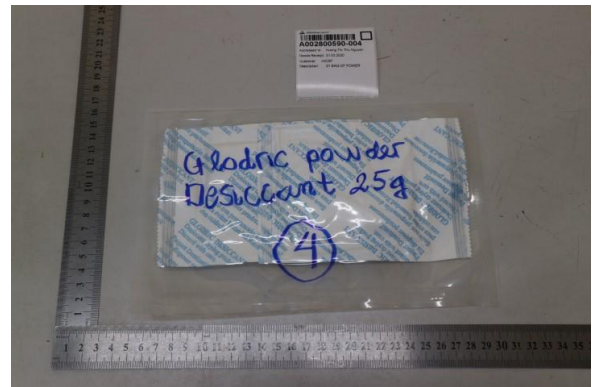
Item 1 - Lab ID.: A002800590-001



Item 2 - Lab ID.: A002800590-002



Item 3 - Lab ID.: A002800590-003



Item 4 - Lab ID.: A002800590-004



Item 5 - Lab ID.: A002800590-005



Item 6 - Lab ID.: A002800590-006





Item 7 - Lab ID.: A002800590-007



Item 8 - Lab ID.: A002800590-008



Item 9 - Lab ID.: A002800590-009



Item 10 - Lab ID.: A002800590-010



Item 11 - Lab ID.: A002800590-011



Item 12 - Lab ID.: A002800590-012

--- END ---